

# MK Analogue DPU-103 - the famous Denon in a soundcan



**An eye-catcher on any turntable:** the DPU-103 from MK Analogue in a real wood body not only sounds good, it looks good too. Noble, powerful sound, heavy - the **Denon DL-103** in the real wood-aluminium sound box

The shape was not chosen at random: The DPU-103 from MK Analogue is both a reminiscence of the legendary Ortofon sound boxes and a tribute to the long-running **Denon DL-103**. It maintains the virtues of the latter, but upgrades it visually and, above all, sonically. This actually goes in the direction of the much-appreciated sound of an SPU.

Visually, it is an eye-catcher on any turntable, especially those with a classic (vintage) look. And it is made for use on a heavy tonearm that can balance the 32 gram weight. Because a **Denon DL-103** can only perform at its best on a heavy arm. And the DPU-103 is in top form.

## Structure of the DPU-103

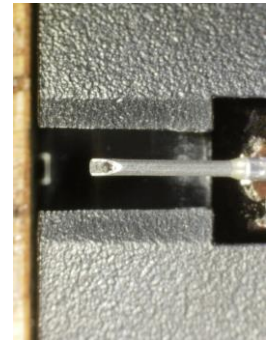
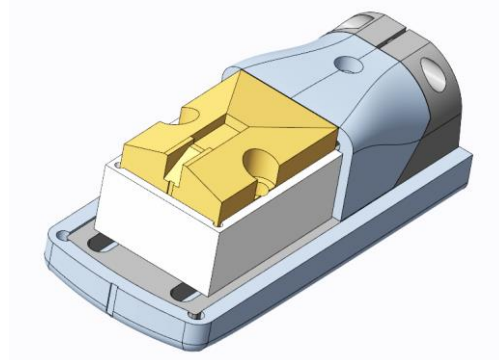
It is the special mix of materials that provides the **DPU-103** with excellent damping properties and characterises its sound: MK Analogue chose walnut wood for the body, after also diligently experimenting with other types of wood. The two CNC-milled wooden elements are connected to a classic aluminium headshell.

Walnut has the advantage that it is quite hard on the one hand and quite light on the other. It is therefore very suitable for damping the resonances of metallic materials, and due to its low mass, the material does not add any "wooden" sound of its own.

The selected **Denon DL-103** sits in its own frame made of CNC-milled aluminium with subsequent silver anodising. This has the following advantages:

The aluminium frame with base encloses the Denon plastic housing tightly. The plastic housing of the Denon DL-103 can therefore no longer resonate.

Thanks to the screw connection with the additional aluminium frame, the pressure of the fastening screws on the fastening part of the plastic housing of the **Denon DL-103** is reduced, which would otherwise "relax / flow" over time. Then the pickup would not only become loose, but the sound would also become spongy.



- The Denon DL-103 systems are closely scrutinised by MK Analogue; only perfect specimens go into production.
- Blue and clever: the integrated dragonfly spirit level
- A damn good idea can be found in the upper walnut element: a blue spirit level, seamlessly integrated, which helps to set the correct VTA (tonearm height) and azimuth.
- The needle distance is based on the standard measurement of an SPU, and of course the whole thing is made for tonearms with SME connection.
- MK Analogue wanted to retain the basic character of the **Denon DL-103** in any case. Because we love this cartridge for its relaxed basic tuning, its extremely high musicality, which predestines it for long-term listening. It's a good-mood sound, it rocks, it has power and dynamics. But no analytics, no annoying, artificial treble - and no artificial spatiality either. And from a technical point of view, the **Denon DL-103** has one more thing to emphasise: At 35 to 40 dB, it delivers fantastic values in terms of channel separation, i.e. the best prerequisite for great stereo imaging.

Nevertheless, there are a few things that are a little annoying with the "normal" **Denon DL-103**:

- the somewhat impetuous, nervous bass reproduction
- (the plastic housing alone is the main culprit here)
- the sometimes slightly clashing mids
- a few per cent resolution missing in the high frequencies



**All this gets better with the DPU-103:**

The bass is more contoured, more precise, it feels even deeper.

The fundamental grooves a little more.

The pickup sounds more full-bodied, richer, more tangible - especially in the mids. There are more tonal colours in play!

The localisation sharpness increases.

The resolution in the treble is improved - but far removed from the bred treble of other cartridges.

The round-needle grind naturally remains the natural limitation.

All in all, this is now an absolutely fully-fledged pickup that lives up to the Denon virtues and makes gains in exactly the right places.



**Technical data for the MK Analogue DPU-103**

Material walnut solid wood, aluminium (headshell + frame)

Internal resistance 40 Ohm (fluctuations approx. 20 %)

Neodymium magnet

Output voltage 0.3 mV

Channel balance < 2 dB (50 to 5,000 Hz)

Frequency response 10-45,000 Hz

Channel separation 35 to 41 dB (depending on specimen)

Needle cut Conical (round)

Aluminium stylus carrier

Compliance or needle compliance 5  $\mu\text{m}/\text{mN}$  (practical value 8 to 9  $\mu\text{m}/\text{mN}$ )

Tracking/scanning capability approx. 70  $\mu\text{m}$

Recommended contact pressure 2.5 to 2.8 grams

Termination resistance 400 to 1,000 Hz, on the MK Analogue SUT-1M 470 Hz (1 : 10)

Diamond rounding 6.5  $\mu\text{m}$

Dimensions (L x W x H) 55 x 19 x 23 mm

(length to SME connector; height to needle; width without bracket)

Weight 32 grams

Azimuth adjustment via hexagon screw

stylus distance 51 mm (analogue Ortofon SPU)



List price 980 €

## Retipping the DPU-103 cartridge

The beauty of the Denon FDL 10103: It can be retipped perfectly.

As an additional upgrade for the **Denon DL-103**, TechneAUDIO recommends retipping with Boron MR microridge as well as Boron Ogura PA Vital. There's nothing better ....so Klaus-Peter Grasse.

Realisation Design und Funktion

**TECHNEAUDIO**

Dipl.-Ing. Klaus-Peter Grasse

Zum Rössle 9

D-79809 Weilheim-Remetschwil

Germany

+49 (0) 7755 938 586

+49 (0) 171 244 0977

info@techne-audio.de

<http://www.techne-audio.de>

